



Lifted Made

Sample 226-052621-053

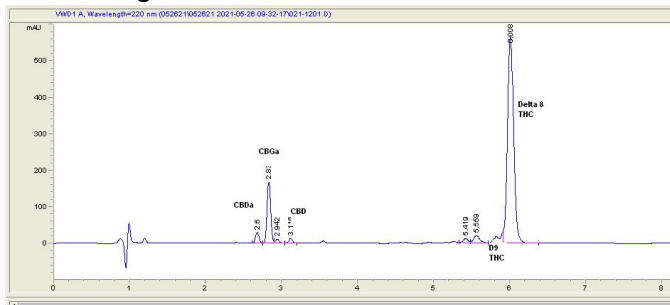
Caviar Flower: Indica OK5YUG

Sample Submitted: 05-26-2021; Report Date: 05-26-2021

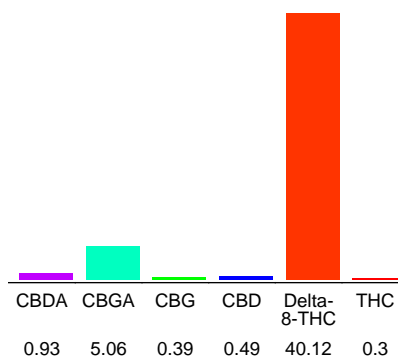
Caviar Flower: Indica OK5YUG

Plant Material: Flower

Chromatogram



Cannabinoid Profile



Cannabinoid Profile by HPLC

0.30%
Calculated THC Yield

1.31%
Calculated CBD Yield

47.29%
Total Cannabinoids

Cannabinoid	% wt	mg/g
CBDA	0.93	9.3
CBGA	5.06	50.6
CBG	0.39	3.9
CBD	0.49	4.9
Delta-8-THC	40.12	401.2
THC	0.3	3.0
Total Cannabinoids	47.29	472.9
Calculated THC Yield	0.30	3.00
Calculated CBD Yield	1.31	13.06

Calculated Maximum THC Yield = $THC + 0.877 * THCA$
 Calculated Maximum CBD Yield = $CBD + 0.877 * CBDA$

Marin Analytics, LLC
250 Bel Marin Keys Blvd, Suite D4
Novato, CA 94949

415-936-6477 / sarabiancalana1@gmail.com

Sara Biancalana
Sara Biancalana
Chief Scientist

This sample has been tested by Marin Analytics, LLC using valid testing methodologies and a quality system. Values reported relate only to the sample tested. Marin Analytics, LLC makes no claims as to the efficacy, safety or other risks associated with any detected or non-detected levels of any compounds reported herein. This Certificate shall not be reproduced except in full, without the written approval of Marin Analytics, LLC.